

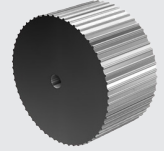
POLYURETHANE TIMING BELTS

AT-Series

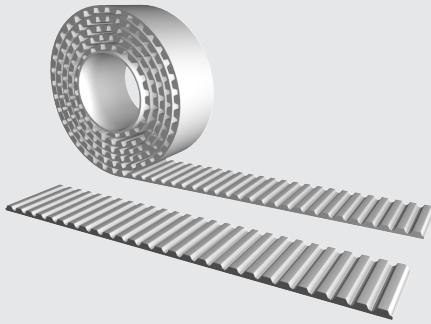
AT5



Pulleys pg #157



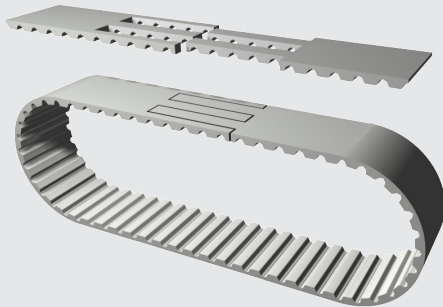
Open-Ended "M"



Specifications

Widths (mm) In between widths available	6	8	10	12	16	20	25	32	50	75	100
Lengths	Any lengths available - Stock rolls 50 meters										
Available Options See page# 130	Nylon coating tooth side (PAZ), Nylon backing (PAR), Nylon both sides (PAZ-PAR), Polyurethane cover (T-Cover), Extra thickness (DR)										
Tension Member Options	Hi-flex Steel standard Steel optional VA301 stainless steel VA316 Hi-flex stainless steel Kevlar®										

Spliced and Welded "V"



Specifications

Widths (mm) In between widths available	10	12	16	20	25	32	50	75	100
Min. Joined Length (mm) Increasing in one tooth increments	400								
Available Options See page# 130	Nylon coating tooth side (PAZ), Nylon backing (PAR), Nylon both sides (PAZ-PAR), Polyurethane cover (T-Cover), Extra thickness (DR)								
Tension Member Options	Hi-flex Steel standard Steel optional VA301 stainless steel VA316 Hi-flex stainless steel Kevlar®								

Ordering Example: Polyurethane Timing Belt

[WIDTH] [PITCH] / [LENGTH] [CONSTRUCTION]
 25 AT5 / 5000 M

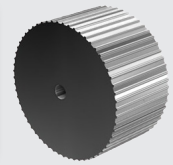
POLYURETHANE TIMING BELTS

AT-Series

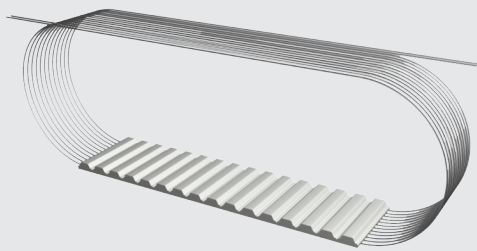
AT5



Pulleys pg #157



Truly Endless "BFX"



Specifications

Widths (mm) In between widths available	6	8	10	12	16	20	25	32	50	75	100
Lengths	See Standard Lengths Below Additional lengths available up to 15,000mm. In between lengths available starting at a minimum length of 720mm.										
Available Options See page# 130	Nylon coating tooth side (PAZ), Double-sided (DL), Extra thickness (DR)										
Tension Member Options	Hi-flex Steel standard Steel optional VA301 Stainless steel VA316 Hi-flex stainless steel Kevlar®										

STANDARD LENGTHS

Pitch/Length Version	Number of Teeth	Pitch/Length Version	Number of Teeth	Pitch/Length Version	Number of Teeth	Pitch/Length Version	Number of Teeth
AT5 / 225 BFX	45	AT5 / 620 SFX	124	AT5 / 1020 BFX	204	AT5 / 3000 BFX	600
AT5 / 255 BFX	51	AT5 / 630 SFX	126	AT5 / 1050 SFX	210	AT5 / 3150 BFX	630
AT5 / 260 SFX	52	AT5 / 660 BFX	132	AT5 / 1075 BFX	215	AT5 / 3350 BFX	760
AT5 / 280 BFX	56	AT5 / 670 SFX	134	AT5 / 1100 BFX	220	AT5 / 3550 BFX	710
AT5 / 300 SFX	60	AT5 / 690 SFX	138	AT5 / 1125 BFX	225	AT5 / 3750 BFX	750
AT5 / 305 BFX	61	AT5 / 710 SFX	142	AT5 / 1215 BFX	243	AT5 / 4000 BFX	800
AT5 / 330 SFX	66	AT5 / 720 BFX	144	AT5 / 1380 BFX	276	AT5 / 4250 BFX	850
AT5 / 340 BFX	68	AT5 / 750 SFX	150	AT5 / 1400 BFX	280	AT5 / 4500 BFX	900
AT5 / 375 SFX	75	AT5 / 780 BFX	156	AT5 / 1500 BFX	300	AT5 / 4750 BFX	950
AT5 / 390 BFX	78	AT5 / 825 SFX	165	AT5 / 1600 BFX	320	AT5 / 5000 BFX	100
AT5 / 420 BFX	84	AT5 / 840 BFX	168	AT5 / 1700 BFX	340	AT5 / 5300 BFX	1060
AT5 / 450 SFX	90	AT5 / 855 BFX	171	AT5 / 1800 BFX	360	AT5 / 5600 BFX	1120
AT5 / 455 BFX	91	AT5 / 860 SFX	172	AT5 / 1900 BFX	380	AT5 / 6000 BFX	1200
AT5 / 480 SFX	96	AT5 / 875 BFX	175	AT5 / 2000 BFX	400	AT5 / 6300 BFX	1260
AT5 / 490 SFX	98	AT5 / 900 SFX	180	AT5 / 2120 BFX	424	AT5 / 6700 BFX	1340
AT5 / 500 BFX	100	AT5 / 920 SFX	184	AT5 / 2240 BFX	448	AT5 / 7100 BFX	1420
AT5 / 525 SFX	105	AT5 / 960 BFX	192	AT5 / 2360 BFX	472	AT5 / 7500 BFX	1500
AT5 / 545 BFX	109	AT5 / 975 SFX	195	AT5 / 2500 BFX	500		
AT5 / 600 SFX	120	AT5 / 990 BFX	198	AT5 / 2650 BFX	530		
AT5 / 610 BFX	122	AT5 / 1005 BFX	201	AT5 / 2800 BFX	560		